

The male reproductive system.



In order for a baby to be made we need both the male and female reproductive systems. Just as our outward appearances are different as boys and girls so are our reproductive system. Today we are going to take a look at the male reproductive system.



The following link will take you to a video explaining the parts of the male reproductive system: <https://youtu.be/T8q3JpTWhrY>



Match each definition with the correct term.

Definitions

1. _____ tube that carries sperm from the epididymis to the urethra
2. _____ major male sex hormone
3. _____ whitish fluid that contains sperm
4. _____ male sex cell
5. _____ coiled tube where sperm mature
6. _____ male organ that contains the urethra
7. _____ structure that secretes a fluid that helps form semen

Terms

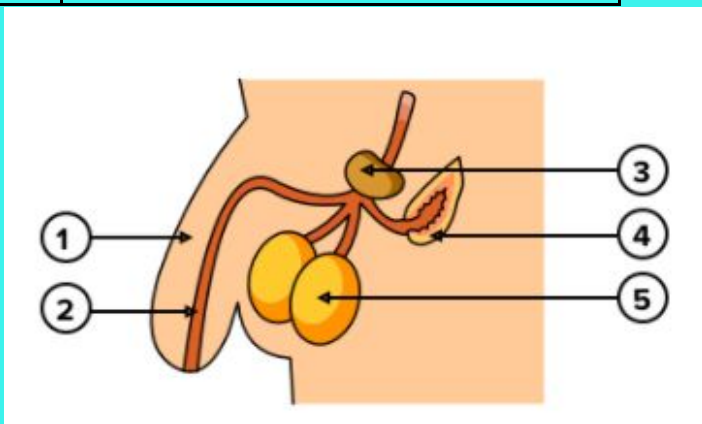
- a. penis
- b. vas deferens
- c. prostate gland
- d. sperm
- e. epididymis
- f. semen
- g. testosterone



Fun fact: A healthy male testes can produce around 500 million sperm cells daily.

Label the parts of the male reproductive system

1	
2	
3	
4	
5	



Hey students, create a short animation with the male reproductive organs and its functions.

Here's some links to help you get started: <https://youtu.be/iDXjTWDN990>
<https://www.youtube.com/watch?v=2afYgPot2Q4>
<https://www.youtube.com/watch?v=-SAKJ9xzu8>